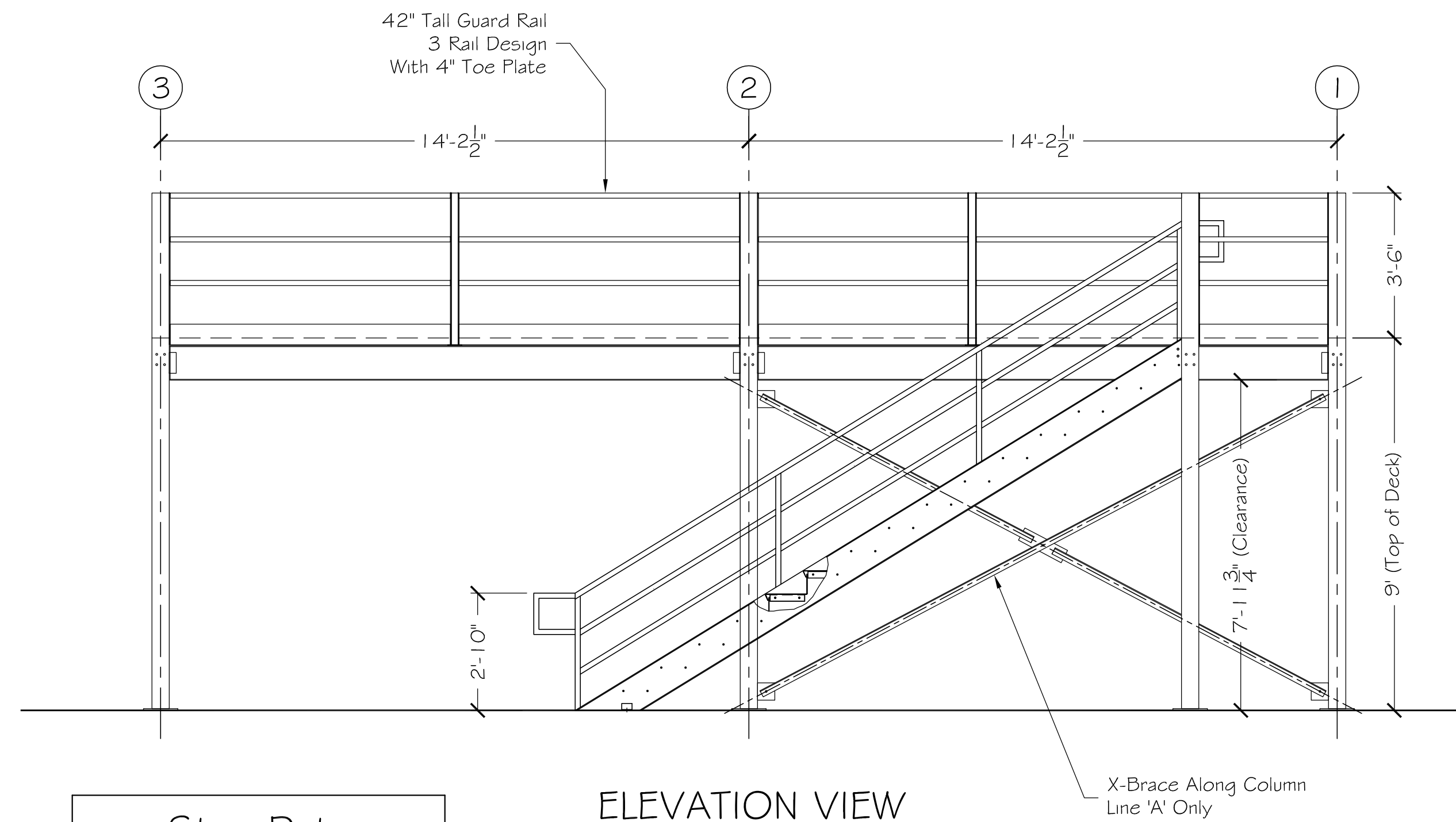


ELEVATION VIEW  
Along Column Line '3'



ELEVATION VIEW  
Along Column Line 'A'

Stair Data	
Top of Deck	9'-0"
Rise Dimension	6 <sup>3</sup> / <sub>4</sub> "
Run Dimension	11"
Tread Width	36"
No. of Treads	15
No. of Risers	16
Handrail Height	34"

**MEZZANINE NOTES:**

- \* Area: 820.5 Ft<sup>2</sup> (Approx.)
- \* Capacity: 125 psf (Live Load)
- \* Deck: <sup>3</sup>/<sub>4</sub>" T&G Plywood Over 20 Ga. x 1-1/2" B-Deck
- \* Elevation: 9'-0" Top of Deck

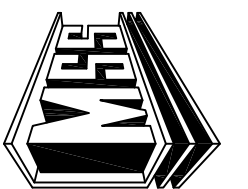
**General Notes:**

- 1.) Designed per the 2006 IBC, ASCE 7-05 and 9th edition ASD AISC
- 2.) Seismic Information:  
Occupancy Category II  
Site Class "D"  
Ordinary Steel Concentrically Braced Frame  
Fa=1.6  
Fv=2.4  
Sds=0.094  
Sd1=0.059  
R=3.25
- 3.) Design Loads:  
wLL=125.0 psf  
wDL=15.00 psf  
WL=10 psf
- 4.) Material Specifications:  
Tubes, ASTM A500 Grade B, Fy=46 ksi  
Wide Flange, ASTM A572 Grade 50, Fy=50 ksi  
All others, ASTM A36 Grade 36, Fy=36 ksi
- 5.) Bolts: Framing Bolts, ASTM A325 or better
- 6.) Welds: <sup>1</sup>/<sub>8</sub>" Min. thickness E70XX
- 7.) Anchor Bolts: <sup>5</sup>/<sub>8</sub>"Ø x 3<sup>1</sup>/<sub>2</sub>" minimum embedment LDT
- 8.) Foundation: Designed by Others

**ABC Company**  
Site Address

**Structural Mezzanine**

**MATERIAL STORAGE SYSTEMS, INC.**  
8827 Will Clayton Parkway  
Humble, TX 77338



Phone: (281) 446-7144  
(800) 981-6750  
Fax: (281) 446-7391  
Web: www.msshouston.com

DATE	REVISION	No.
		1
		2
		3
		4
		5

DATE	DRAWN BY:	DWG No.	SCALE:	SHEET:
	RAO	Technical	3/8" = 1'-0"	1

NOTE: This drawing is the property of Material Storage Systems, Inc. It may not be reproduced, copied, or disseminated in any form without the written permission of Material Storage Systems, Inc.